

# CDC'S ENVIRONMENTAL PUBLIC HEALTH TRACKING NETWORK

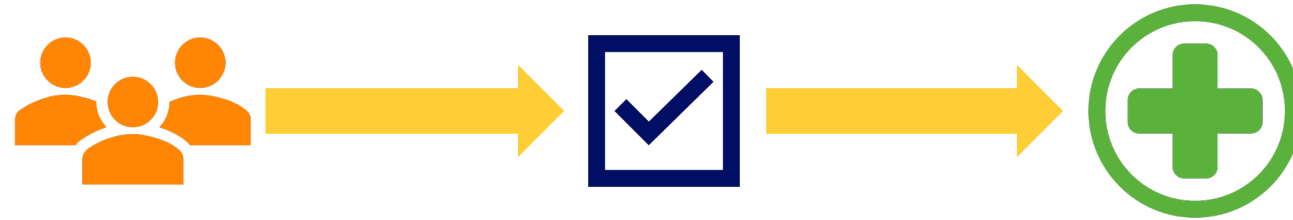
**Mitra Kashani, MSc**

Urban Waters Learning Network

November 14<sup>th</sup>, 2024



# PROVIDES BETTER INFORMATION FOR BETTER HEALTH



*Tracking empowers people to make information-driven decisions to protect and improve health.*



ENVIRONMENTAL PUBLIC HEALTH

# TRACKING

# CONNECTS ENVIRONMENT & HEALTH INFORMATION

Check out CDC's data explorer and state and local tracking programs for more information.

## Environmental



- Radon
- Drought
- Sunlight & UV
- Wildfire Smoke

- Air Quality
- Extreme Heat
- Drinking Water
- Flood Vulnerability
- Community Design

- Pesticide Exposures
- Toxic Substance Releases
- Other Environmental Chemicals

## Exposures



## Health Effects



- Asthma
- Cancer
- Heart Disease
- Heat Stress Illness
- Childhood Lead Poisoning
- Developmental Disabilities
- Carbon Monoxide Poisoning
- Reproductive and Birth Outcomes

## Population Characteristics



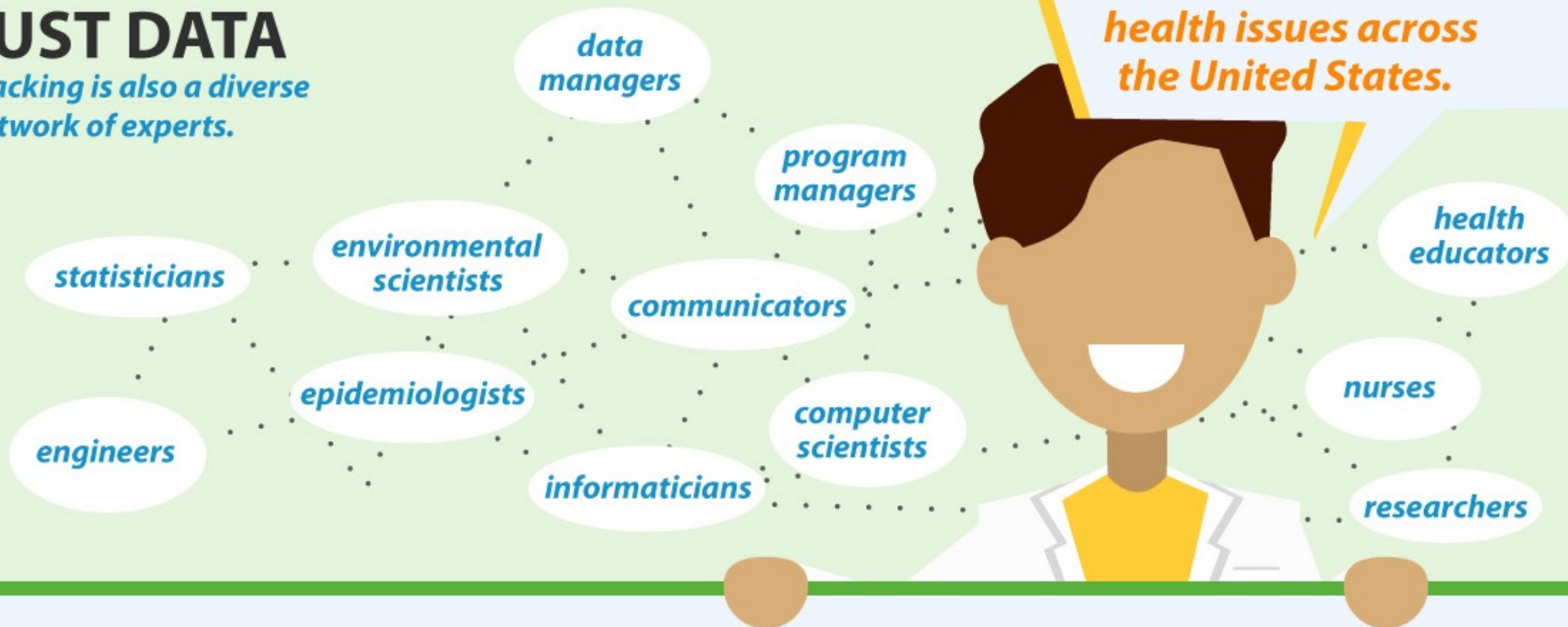
- Lifestyle Risk Factors
- Socioeconomics
- Demographics
- Vulnerabilities



# ✓ TRACKING IS MORE THAN JUST DATA

*Tracking is also a diverse network of experts.*

*Tracking staff uses their expertise to help solve environmental and health issues across the United States.*





ENVIRONMENTAL PUBLIC HEALTH  
**TRACKING**  
**DELIVERS DATA**  
**RELEVANT**  
**TO YOUR NEEDS**

*Tracking makes standardized data easier to use.*

- 8
- D
- D
- E
- D



**Environmental Justice Dashboard**  
Home

Where we live, work, and play affects our health. Use our Environmental Justice Dashboard to explore data on environmental exposures, community characteristics, and health burden — factors important to understanding and addressing environmental justice issues.

Explore environmental justice data for your community.

Enter zip or county here

**Why is environmental justice data important?**

**23.7%**  
About 23.7% of the U.S. population belongs to a racial or ethnic minority group.

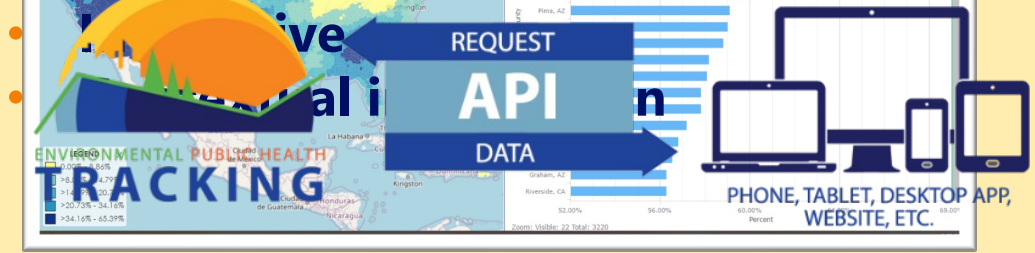
**12.3%**  
12.3% of the U.S. population is living in poverty.

Racial and ethnic minority, low-income and indigenous communities are most often disproportionately affected by environmental hazards, such as environmental pollutants and climate-related events.



**Interactive Data Explorer**  
*(maps, charts, and tables)*

• **Curated, location-specific information on a topic**



ENVIRONMENTAL PUBLIC HEALTH  
**TRACKING**

REQUEST DATA

PHONE, TABLET, DESKTOP APP, WEBSITE, ETC.



**Dashboards**



**Application Program Interface (API)**

• **Developers can use Tracking data in their own tools and products**

ENVIRONMENTAL PUBLIC HEALTH  
**TRACKING**  
**DELIVERS DATA**  
**RELEVANT**  
**TO YOUR NEEDS**

*Tracking makes standardized data easier to use.*

- 800+ Measures
- Data Visualizations
- Downloadable Data
- Export Images
- Data Visualization Embedding



**Interactive Data Explorer**  
*(maps, charts, and tables)*

